

ECP 8000 SERIES

EMI SHIELDING

HONEYCOMB VENT

PANELS



Aluminium honeycomb shielding vents are designed as a simple screw-on panel to provide an effective shield against the passage of RFI and EMI.

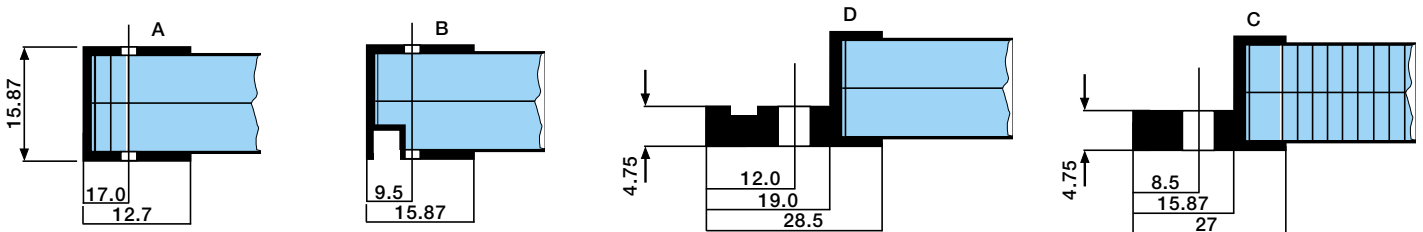
Several styles of frame section are available giving the designer or OEM an easy solution to protect airflow or lighting aperture.

The standard construction is comprised of Aluminium honeycomb in 2 layers each 6.3mm thick x 3mm diameter, laminated in a crosscell construction contained in a peripheral extruded aluminium frame.

Optional frame sections, flat or with groove depending on type of seal required, with drilled holes or threaded inserts provided for fixing.

SPECIFICATION

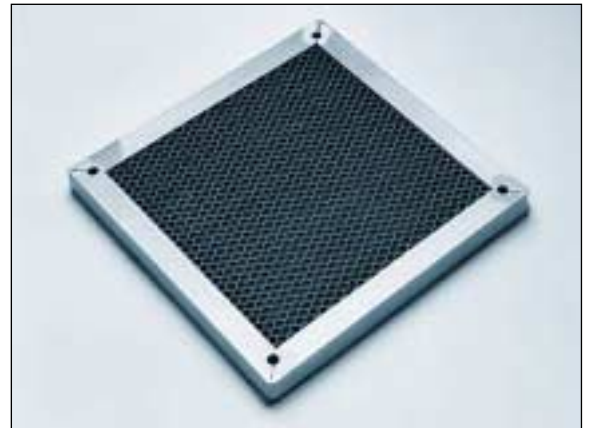
Frame Design



Standard finish in Alocrome 1200. Paint finishes to BS or Ral specs.

MATERIAL

Extrusion	Aluminium Alloy 6063-T1 QQ-A-200/9
Filter Media	Aluminium Alloy 5056 per RR-W-365
Honeycomb	MIL-C-7438
Grilles	Aluminium Alloy 3003-H-14 per QQ-A-359
Finish	Chromate to MIL-C-5541



EMI SHIELDING 3mm cell Size

STANDARD HONEYCOMB

Finish	H-Field	E-Field	Plane Wave	Plane Wave
	100kHz	10MHz	1GHz	10GHz
Chromate	40dB	75 dB	60 dB	40 dB
Tin	70 dB	125 dB	100 dB	80 dB
Nickel	75 dB	130 dB	115 dB	95 dB

CROSS-CELL HONEYCOMB FINISH

Finish	H-Field	E-Field	Plane Wave	
	100kHz	10MHz	1GHz	10GHz
Chromate	60dB	105 dB	90 dB	80 dB

SALES 01706 647718



ECP 8000 SERIES

EMI SHIELDING

HONEYCOMB VENT

PANELS



DESIGN CONSIDERATIONS

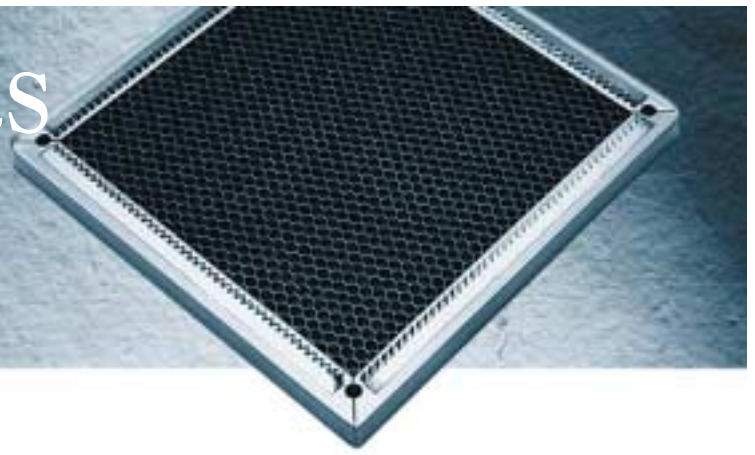
The panels are supplied in rigid aluminium frames, with captive fasteners, or pre-drilled to customer requirements. Consider the choice of honeycomb, honeycomb straight, slanted for water run off, cross cell for additional attenuation. The standard vents have the support frame bent at three corners with the final corner welded and seams left open. The seams can be welded if require to maximise shielding performance. The frames can be supplied pre-fitted with shielded knitted mesh or BeCu panel fingerstock gasket. Dust fillers and protective expanded metal meshes can be fitted to protect the honeycomb.

HOW TO ORDER

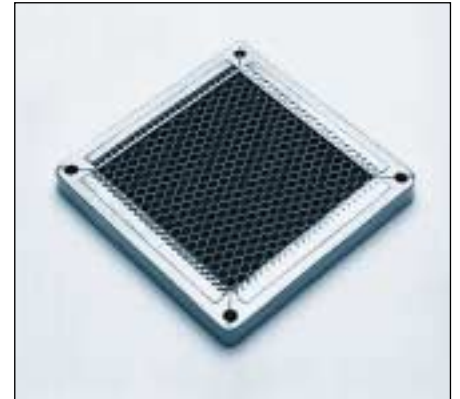
8000 SERIES HONEYCOMB SHIELDED VENT PANELS

<p>80XX</p> <p>Series</p> <p>01 Style 02 Style 03 Style 04 Style</p>	<p>YYZZ</p> <p>Gasket</p> <p>00 None 10 TCS Mesh 31 Composite TCS Mesh 32 Composite Monel Mesh 50 BeCu ECP 625 51 BeCu ECP 625 + Neoprene 90 Custom Gasket</p>	<p>XXXX</p> <p>Dimensions</p> <p>Honeycomb Type</p> <p>1 Straight Honeycomb 2 Slanted Honeycomb 3 Cross Cell 4 Cross Cell Slanted</p> <p>Honeycomb Material</p> <p>0 Aluminium 3mm cell 2 Aluminium 1.5mm cell</p>
--	--	--

ECP 8200 SERIES SHIELDED FAN VENT

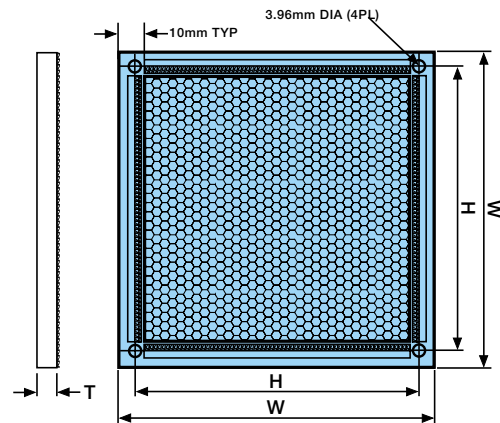
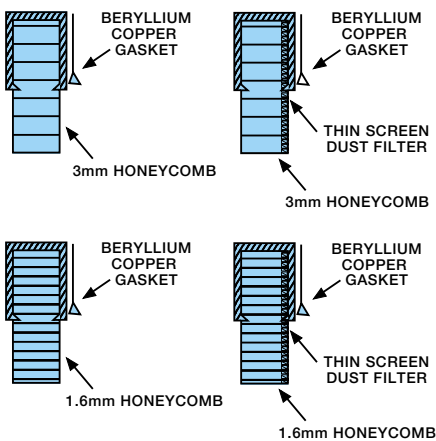


The 8200 series of shielded fan vents is a range of standard vents for use on equipment enclosures requiring EMI shielding with maximum air flow. The vents are constructed from a 6.4mm single honeycomb layer in 3mm or 1.6mm cells and held in predrilled rigid aluminium frames with a conductive chromate finish. Five sizes are available to match standard fans and the vents may also be combined with an aluminium dust screen. The vents are supplied with ECP 625 Becu Gasket fitted as standard.



SPECIFICATION

Aluminium Extrusion.....Alloy 6063-T1
Honeycomb.....6.4mm Thk Aluminium
Finger Stock.....Beryllium Copper



WIDTH W (mm)	HOLE SPACE H (mm)	THICKNESS T (mm)
60	50	8.4
80	71.3	8.4
119	105	8.4
127	113	8.4
92	82.5	8.4

HOW TO ORDER

PART NO.	DESCRIPTION
ECP 8205 - 5001 - XXX	3mm cell - no dust screen
ECP 8205 - 5005 - XXX	3mm cell - with dust screen
XXX - REPRESENTS VENT WIDTH e.g. 080 = 80mm wide	

SALES 01706 647718



ECP 8300 SERIES

QUIET VENTS

HONEYCOMB



TBA ECP offers the largest selection of commercial grade honeycomb vents of any supplier with 66 standard sizes. With the honeycomb material's unique advantages of light-weight construction, unrestricted, quiet air flow, high shielding efficiency, plus reduced turbulence, standard Quiet Vents are an excellent, low-cost solution to the demanding cooling requirements of today's equipment.

Standard Length	Number of Fasteners	C	D
3" (A or B)	1	1.25"	NA
4" (A or B)	1	1.75"	NA
5" (A Only)	1	2.25"	NA
5" (B Only)	2	.75"	3.00"
6" (A or B)	2	1.00"	3.50"
7" (A or B)	2	1.50"	3.50"
8" (A Only)	2	2.00"	3.50"
8" (B Only)	3	.75"	3.00"
9" (A or B)	3	.75"	4.00"
10" (A or B)	3	1.25"	3.50"
12" (A or B)	4	1.25"	3.00"
14" (A or B)	4	1.50"	3.50"
16" (A or B)	5	1.25"	3.25"

Construction

The honeycomb panels are supplied in rigid, extruded aluminium frames, with optional captive fasteners or through holes as detailed below.

Frame Shielding

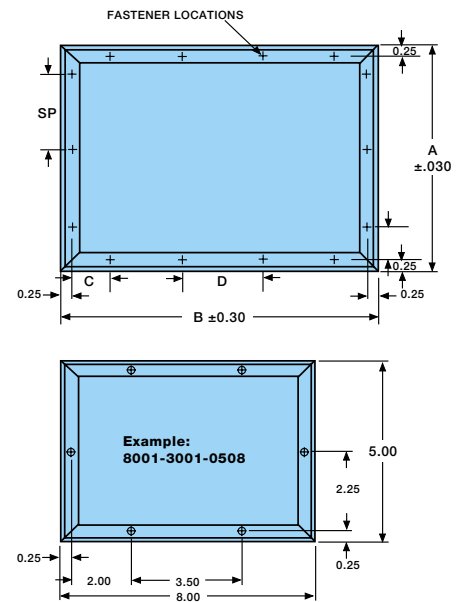
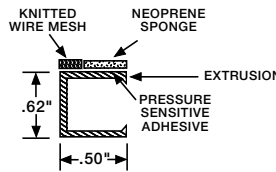
Vents come standard with composite knitted gaskets, which combines a neoprene gasket with wire mesh for efficient RFI/EMI shielding between the frame and the mounting surface.

Fastener/Hole locations

For the height (A) and the width (B) use the chart to determine number and location of the captive fasteners or through holes per side.

Frame Style 1a and 1b

Style 1a has captive fasteners. Style 1b has through holes. Standard finish is MIL-C-5541 Iridite. Other finishes can be supplied if required.



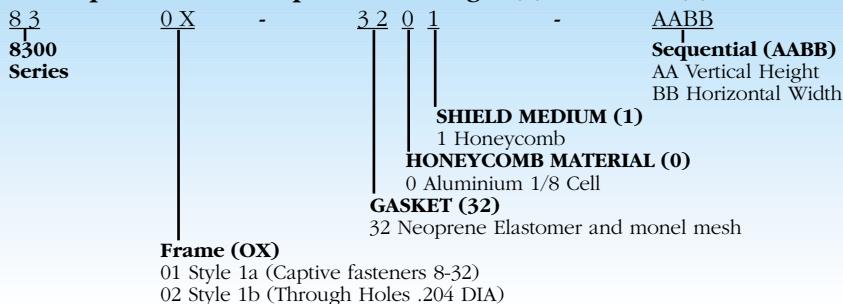
Sequential Numbers For Standard Frame Sizes

	Horizontal Size (B) of Frame											
	3"	4"	5"	6"	7"	8"	9"	10"	12"	14"	16"	
3"	0303	0304	0305	0306	0307	0308	0309	0310	0312	0314	0316	
4"	0403	0404	0405	0406	0407	0408	0409	0410	0412	0414	0416	
5"	0503	0504	0505	0506	0507	0508	0509	0510	0512	0514	0516	
6"	0603	0604	0605	0606	0607	0608	0609	0610	0612	0614	0616	
7"	0703	0704	0705	0706	0707	0708	0709	0710	0712	0714	0716	
8"	0803	0804	0805	0806	0807	0808	0809	0810	0812	0814	0816	
9"	0903	0904	0905	0906	0907	0908	0909	0910	0912	0914	0916	
10"	1003	1004	1005	1006	1007	1008	1009	1010	1012	1014	1016	
12"	1203	1204	1205	1206	1207	1208	1209	1210	1212	1214	1216	
14"	1403	1404	1405	1406	1407	1408	1409	1410	1412	1414	1416	
16"	1603	1604	1605	1606	1607	1608	1609	1610	1612	1614	1616	

HOW TO ORDER

Example: Part number 8001-3001-0508 is an aluminium honeycomb vent 5" x 8" shielded with gasket.

The sequential number specifies the height (A) and width (B) of the frame.



SALES 01706 647718

